



## **PORTS AND NETWORKING BASICS QUICK GUIDE**

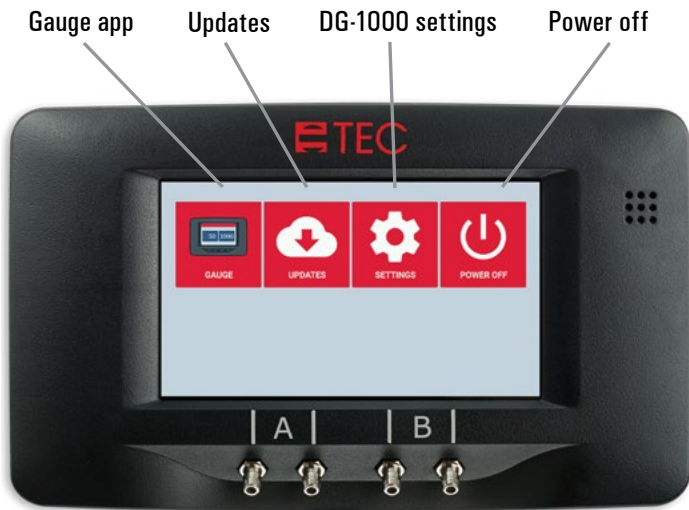
Ports and more



- |  |   |
|--|---|
| <b>1. Fan control jack</b>                   | Input for a mono cable to connect the gauge to the fan speed controller.  |
| <b>2. Fast charging indicator light</b>      | Lights up when the gauge is being charged via the fast charging port. Turns off when the gauge is fully charged.  |
| <b>3. Fast charging port</b>                 | Input for the gauge charger. The gauge can be used while being charged.   |
| <b>4. Ethernet port</b>                      | Port for connecting the gauge to a router or switch via an ethernet cable.  |
| <b>5. USB port</b>                           | Limited use: Can be used with USB keyboard or mouse.  |
| <b>6. Micro USB charging indicator light</b> | Lights up when the gauge is being charged via the micro USB cable.  |
| <b>7. Micro USB port/charging port</b>       | Port for connecting the gauge to a computer via a micro USB cable. When the gauge is connected to a computer via a micro USB cable, it will also receive a slow charge. Use of the micro USB port for remote connection to software and apps requires the installation of a driver. See "Installing the USB device driver" on page 4 to learn more. |
| <b>8. Power indicator light</b>              | Turns on to indicate the gauge is powered on.   |
| <b>9. Power button</b>                       | Push down and hold for a few seconds to power the gauge on and off.   |

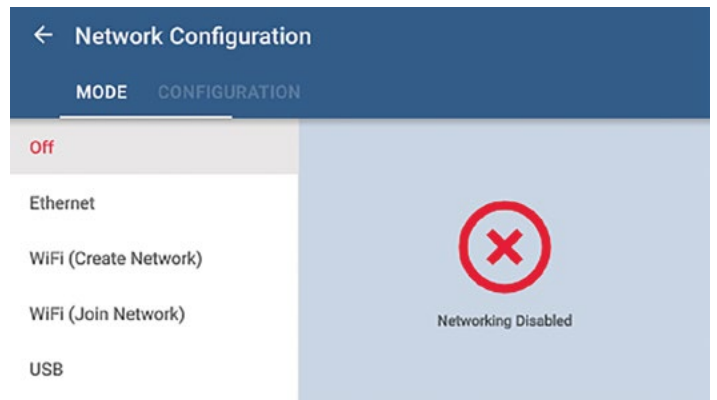
**Launch the Settings app**

Open the Settings app to view the DG-1000 settings, which include the networking options.



**Network Configuration menu**

Touch to select networking option



**Off**  
Networking is disabled

**Ethernet**

The Ethernet port is used with a router or switch to connect the gauge to a computer or mobile device, or to create a network of multiple gauges that can connect to a Windows computer or mobile device.\*

**WiFi (Create Network)**

The built-in WiFi adapter creates and broadcasts a wireless network that can be used to wirelessly connect the gauge to a computer or mobile device.

**WiFi (Join Network)**

The built-in WiFi adapter can join an existing wireless network (typically a router). This option can be used to connect the gauge to computer or mobile device, or to create a network of multiple gauges that can connect to a computer or mobile device.\*

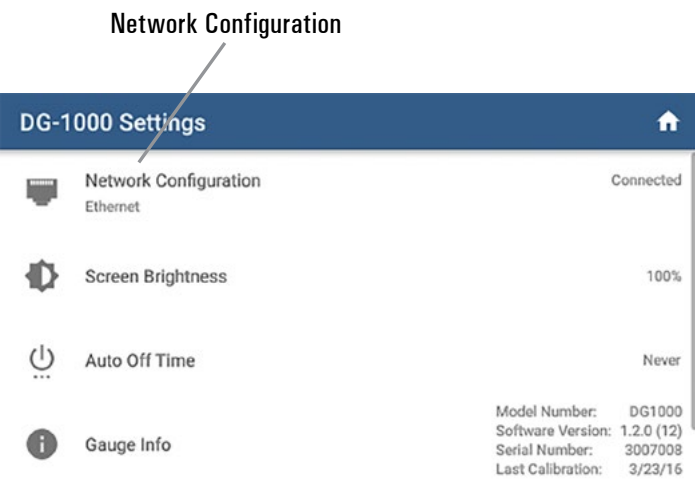
**Micro-USB Port**

This port is used to connect the gauge directly to a USB port on a Windows computer. This requires a device driver to be installed on the computer. See instructions in the USB driver installation section of this quick guide.

\* If the router or network has an internet connection, then the Update app can be used to check for and install available updates.

**Open the Network Configuration settings**

Touch Network Configuration to set the needed networking settings. Networking options are used to remotely connect to the DG-1000 using TEC software and apps, or to connect to the internet for updates.



**TEC software and the DG-1000**

TEC software that can be used to remotely connect to a DG-1000 includes:

**TECTITE and TECTITE Express (Windows)**

Conduct tests and generate reports on fully automated airtightness tests of buildings using a single fan.

**TECLOG3 (Windows)**

Conduct automated multi-fan airtightness tests of large buildings, and data log and graphically display pressure measurements from one or more gauges.

**TEC Gauge (Windows and mobile)**

Formerly named iTEC-700. Used to remotely display, control and capture readings from a single gauge.

**TEC Auto Test (mobile)**

Conduct tests and generate reports on fully automated airtightness tests of buildings and duct systems using a single fan.

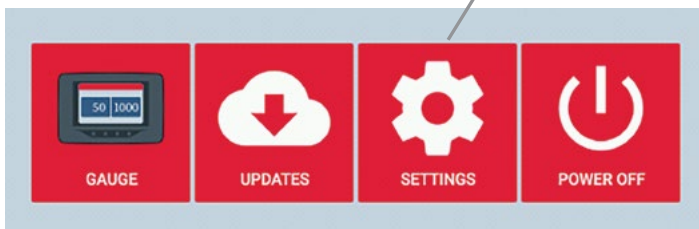
**Installing the USB device driver**

The DG-1000 USB device driver is compatible with

- Windows 7
- Windows 8
- Windows 10

1. Make sure the computer is connected to the internet.
2. The Windows Update service on the computer must be configured to allow downloading and installation of driver software.
3. Enable the USB networking port on the DG-1000 gauge.
  - Touch Settings on the home screen

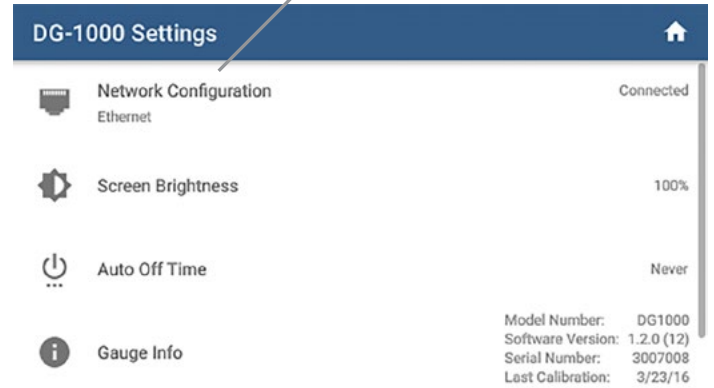
DG-1000 settings



**Installing the USB device driver continued**

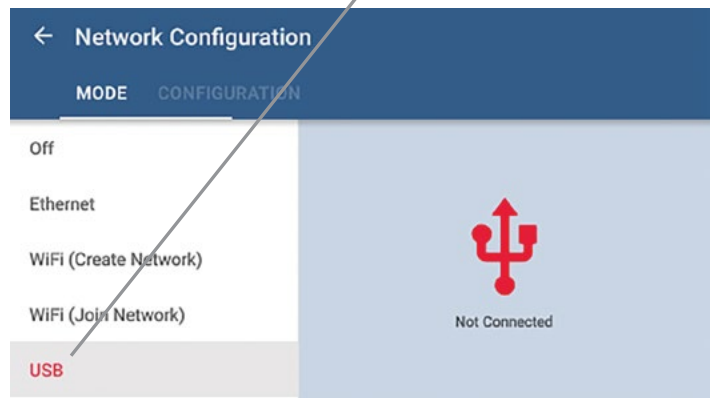
- Touch Network Configuration

Network Configuration



- Select USB from the Network Configuration options

USB



- The networking status in the Network Configuration screen will show "Not Connected."

4. Connect the micro-USB end of the cable to the gauge, and the USB end to the computer.





**Installing the USB device driver continued**

- Windows Update will now search for the appropriate device driver to install. Once the device driver is found, Windows will install the driver on the computer, and may display the message “USB Ethernet/RNDIS Gadget. Device driver software installed successfully.”

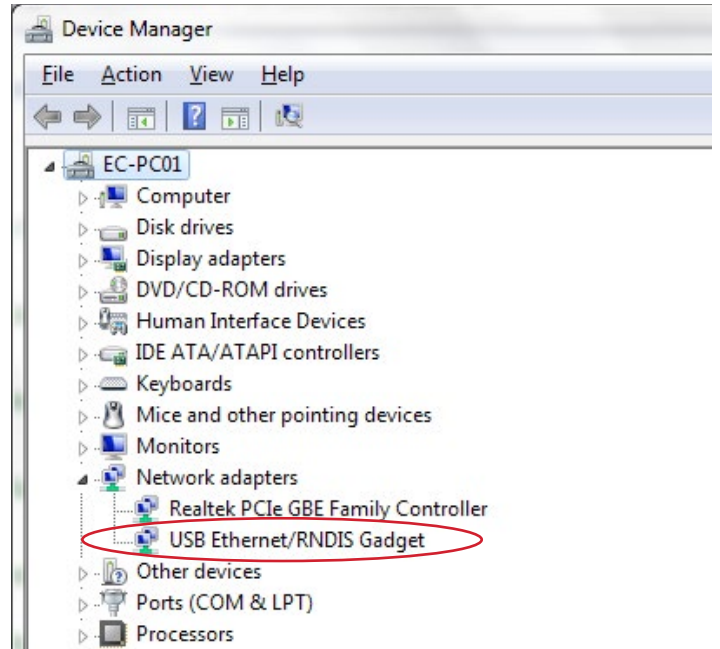


- Once the driver is installed, the networking status in the Network Configuration screen of the gauge will update to say “Connected.”

**Installing the USB device driver continued**

**Optional**

- With the USB cable plugged into the gauge and computer, open the Device Manager on the computer and look at the network adapters section (you may need to click on the arrow next to network adapters to show the current active devices). You should see USB Ethernet/RNDIS Gadget in the network adapters section. (Device Manager is available from the Control Panel menu.)



### Software Information

The Energy Conservatory (TEC) offers a variety of Windows-based programs. These programs can be found and downloaded for free at [software.energyconservatory.com](http://software.energyconservatory.com).

TEC also offers driver support for the DG-500, DG-700 and DG-1000. The drivers are designed to work with Windows-based computers with the following operating systems:

- Windows 7
- Windows 8
- Windows 8.1
- Windows 10

The drivers are available through Windows Update, and the DG-500 and DG-700 drivers can be downloaded from TEC at [software.energyconservatory.com](http://software.energyconservatory.com).

TEC also offers mobile apps for Apple and Android devices that can be found in the Apple App Store or the Google Play Store.

### Instructional Videos

The Energy Conservatory (TEC) offers a variety of online instructional videos, including

- Minneapolis Blower Door Quick Guide
- Minneapolis Duct Blaster Quick Guide
- Field Calibration Checks for Gauges
- Pressure and Airflow Basics
- Exhaust Fan Flow Meter
- TECLOG3
- TECTITE 4.0
- And many more

Visit [www.YouTube.com/EnergyConservatory](http://www.YouTube.com/EnergyConservatory) to see all of TEC's instructional videos.

### More DG-1000 Guides

All DG-1000 guides are available online at [energyconservatory.com/dg1000guides](http://energyconservatory.com/dg1000guides)

Please refer to the guides listed below for further instructions.

- [DG-1000 Overview Booklet](#)
- [DG-1000 Basic Use Quick Guide](#)
- [Connecting a Single DG-1000 Quick Guide](#)
- [Connecting Multiple DG-1000's Quick Guide](#)
- [Using the DG-1000 with the Minneapolis Blower Door](#)
- Using the DG-1000 with the Minneapolis Duct Blaster (coming soon)



2801 21st Avenue South  
Suite 160  
Minneapolis, Minnesota 55407

Phone: (612) 827-1117

Fax: (612) 827-1051

[info@energyconservatory.com](mailto:info@energyconservatory.com)

[energyconservatory.com](http://energyconservatory.com)